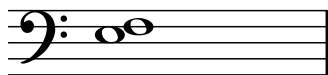
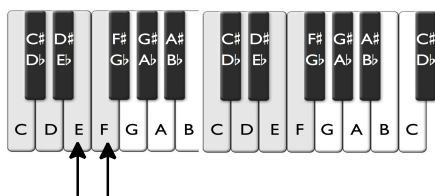
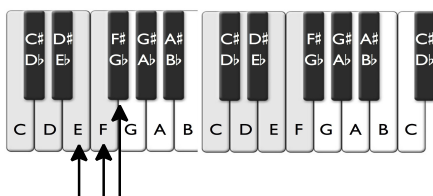


Intervals (Major and Minor 2nds) - Speed Sheet 1

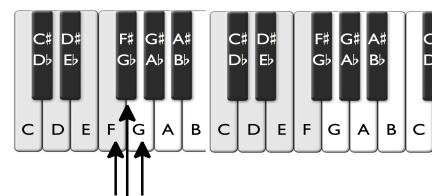
Count the half steps between the notes and indicate whether the interval is a minor 2nd (m2) made of one half step or a major 2nd (Ma2) made of two half steps.



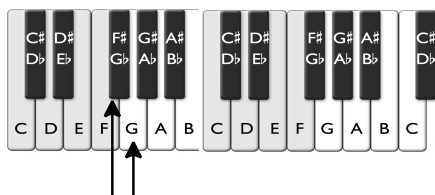
1 m2



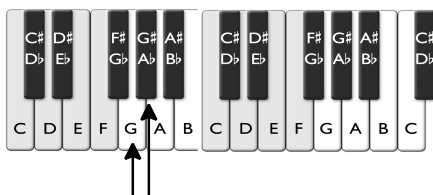
2 Ma2



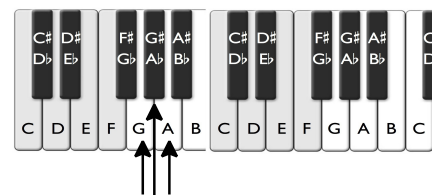
3 Ma2



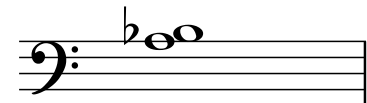
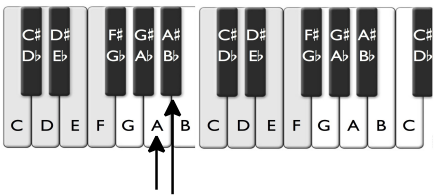
4 m2



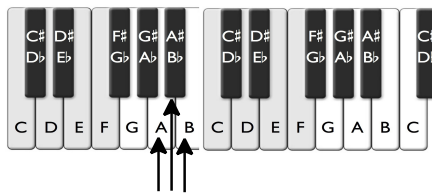
5 m2



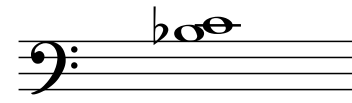
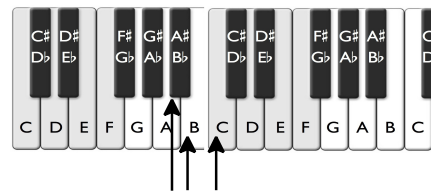
6 Ma2



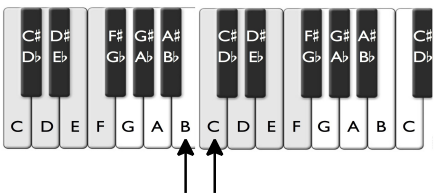
7 m2



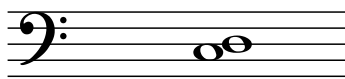
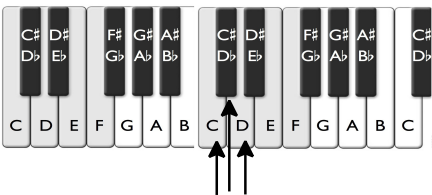
8 Ma2



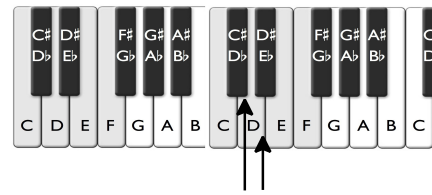
9 Ma2



10 m2



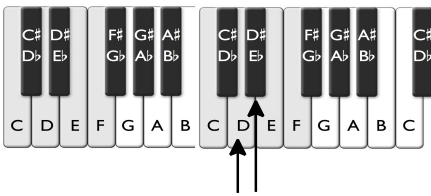
11 Ma2



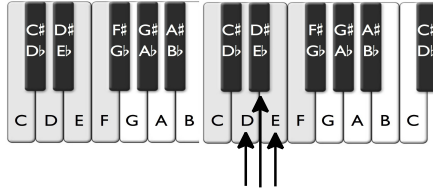
12 m2

(Major and Minor 2nds)

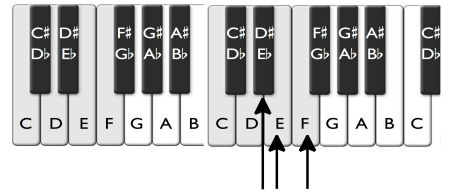
2



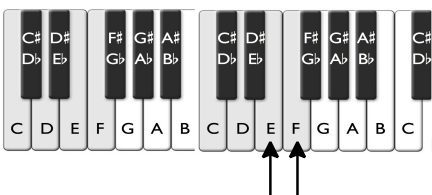
13 **m2**



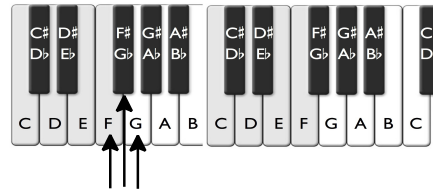
14 **Ma2**



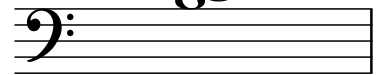
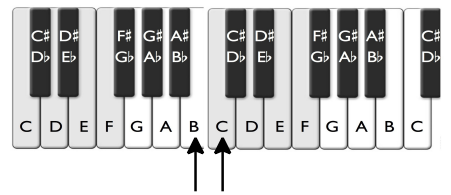
15 **Ma2**



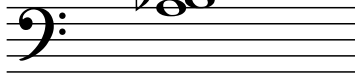
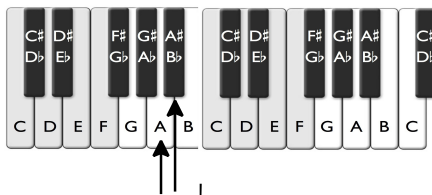
16 **m2**



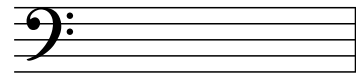
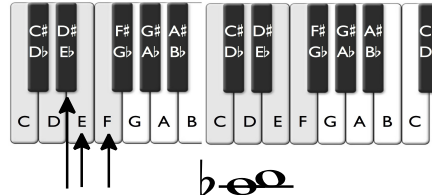
17 **Ma2**



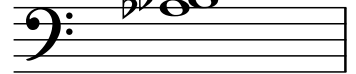
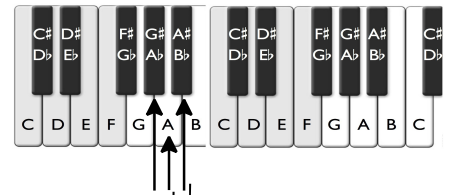
18 **m2**



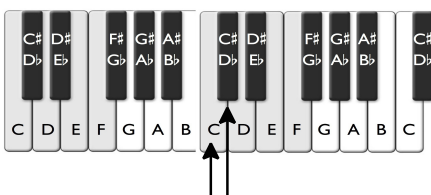
19 **m2**



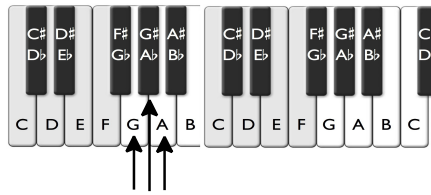
20 **Ma2**



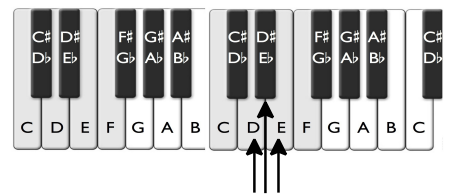
21 **Ma2**



22 **m2**



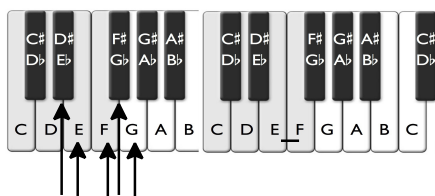
23 **Ma2**



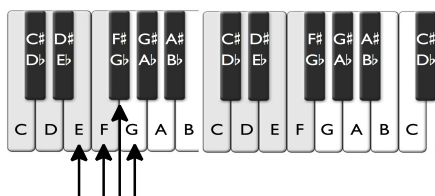
24 **Ma2**

Intervals (Major and Minor 3rds) - Speed Sheet 2

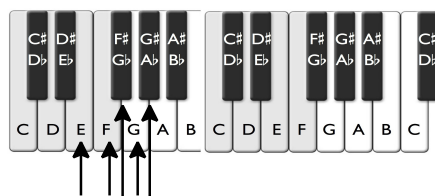
Count the half steps between the notes and indicate whether the interval is a minor 3rd (m3) made of three half steps or a major 3rd (Ma3) made of four half steps.



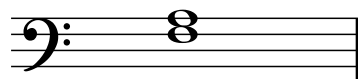
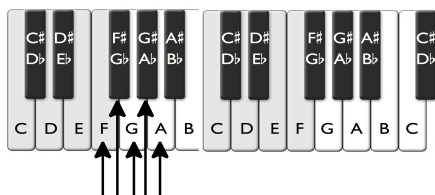
1 Ma3



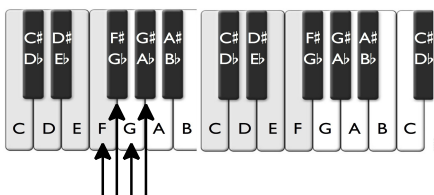
2 m3



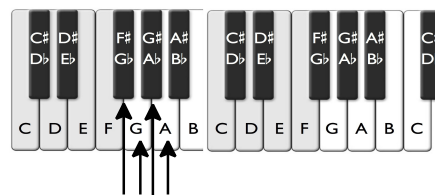
3 Ma3



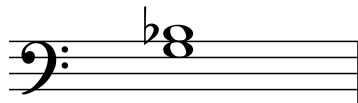
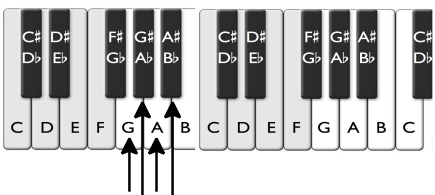
4 Ma3



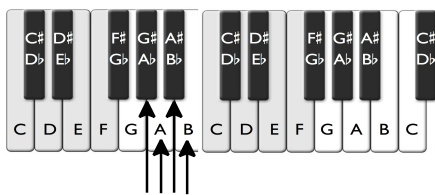
5 m3



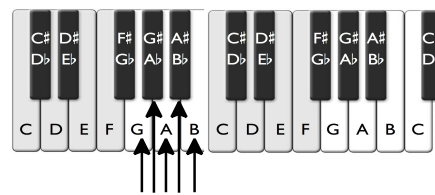
6 m3



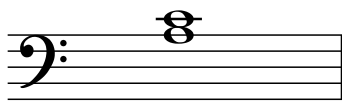
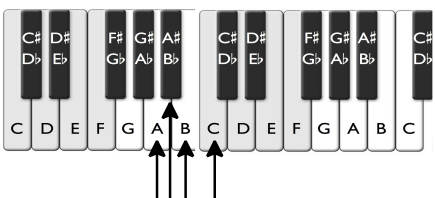
7 m3



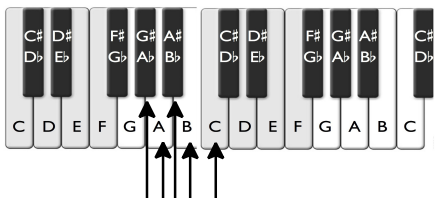
8 m3



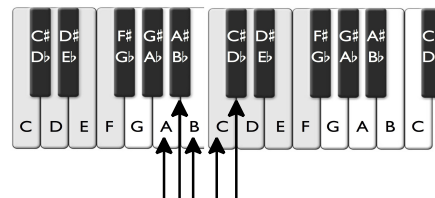
9 Ma3



10 m3



11 Ma3



12 Ma3

(Major and Minor 3rds)

2

Diagram of a piano keyboard with notes C through B. Arrows point to C (white) and E (white) in the middle C octave. Below the keyboard is a bass clef staff with a C-clef on the first line and a natural sign on the C line. An interval of two lines is marked with a brace and the number 8. Below the staff, the number 13 is on the left and **Ma3** is in red on the right.

Diagram of a piano keyboard with notes C through B. Arrows point to C (white) and Eb (black) in the middle C octave. Below the keyboard is a bass clef staff with a C-clef on the first line and a flat sign on the C line. An interval of one and a half lines is marked with a brace and the number 8. Below the staff, the number 14 is on the left and **m3** is in red on the right.

Diagram of a piano keyboard with notes C through B. Arrows point to C (white) and E (white) in the middle C octave. Below the keyboard is a bass clef staff with a C-clef on the first line and a sharp sign on the C line. An interval of two lines is marked with a brace and the number 8. Below the staff, the number 15 is on the left and **Ma3** is in red on the right.

Diagram of a piano keyboard with notes C through B. Arrows point to C (white) and E (white) in the middle C octave. Below the keyboard is a bass clef staff with a C-clef on the first line and a natural sign on the C line. An interval of two lines is marked with a brace and the number 8. Below the staff, the number 16 is on the left and **Ma3** is in red on the right.

Diagram of a piano keyboard with notes C through B. Arrows point to C (white) and Eb (black) in the middle C octave. Below the keyboard is a bass clef staff with a C-clef on the first line and a sharp sign on the C line. An interval of one and a half lines is marked with a brace and the number 8. Below the staff, the number 17 is on the left and **m3** is in red on the right.

Diagram of a piano keyboard with notes C through B. Arrows point to C (white) and Eb (black) in the middle C octave. Below the keyboard is a bass clef staff with a C-clef on the first line and a flat sign on the C line. An interval of one and a half lines is marked with a brace and the number 8. Below the staff, the number 18 is on the left and **m3** is in red on the right.

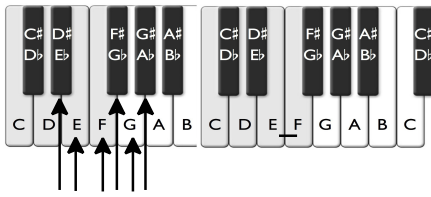
Diagram of a piano keyboard with notes C through B. Arrows point to C (white) and E (white) in the middle C octave. Below the keyboard is a bass clef staff with a C-clef on the first line and a flat sign on the C line. An interval of two lines is marked with a brace and the number 8. Below the staff, the number 19 is on the left and **Ma3** is in red on the right.

Diagram of a piano keyboard with notes C through B. Arrows point to C (white) and Eb (black) in the middle C octave. Below the keyboard is a bass clef staff with a C-clef on the first line and a flat sign on the C line. An interval of one and a half lines is marked with a brace and the number 8. Below the staff, the number 20 is on the left and **m3** is in red on the right.

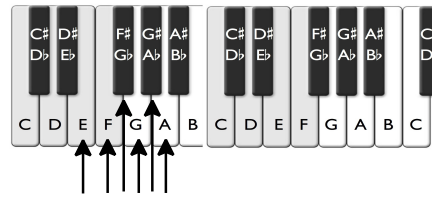
Diagram of a piano keyboard with notes C through B. Arrows point to C (white) and E (white) in the middle C octave. Below the keyboard is a bass clef staff with a C-clef on the first line and a sharp sign on the C line. An interval of two lines is marked with a brace and the number 8. Below the staff, the number 21 is on the left and **Ma3** is in red on the right.

Intervals (Perfect 4ths and 5ths) - Speed Sheet 3

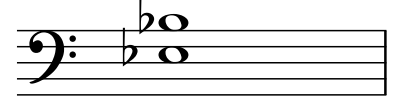
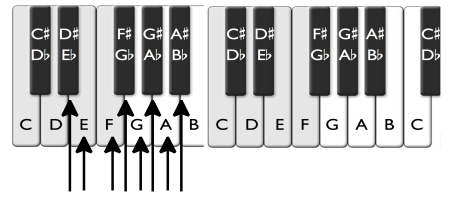
Count the half steps between the notes and indicate whether the interval is a perfect 4th (P4) made of five half steps or a perfect 5th (P5) made of seven half steps.



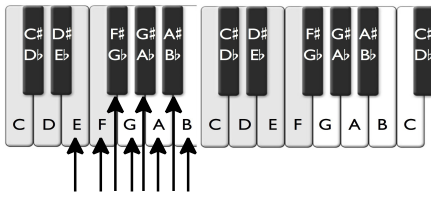
1 P4



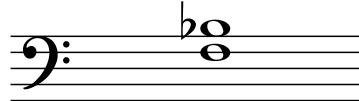
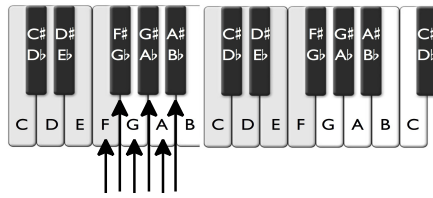
2 P4



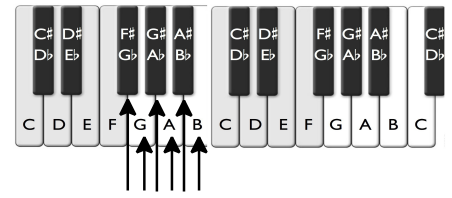
3 P5



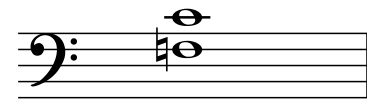
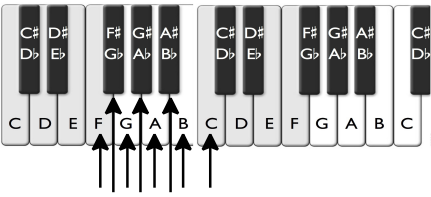
4 P5



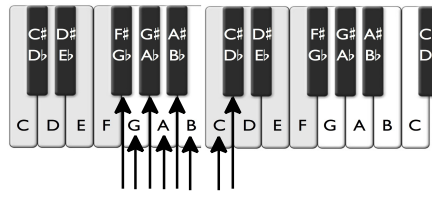
5 P4



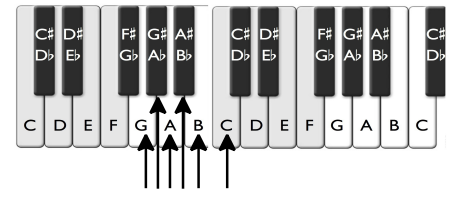
6 P4



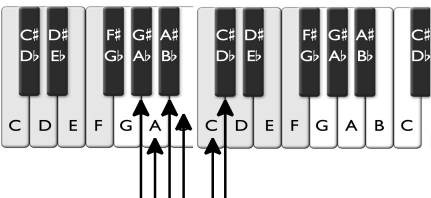
7 P5



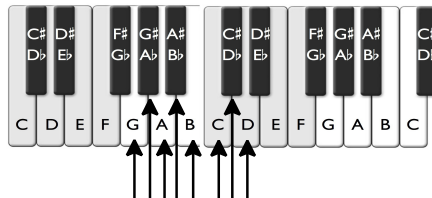
8 P5



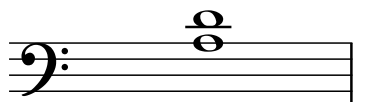
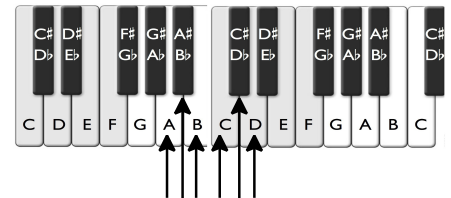
9 P4



10 P4



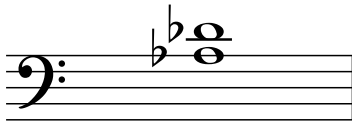
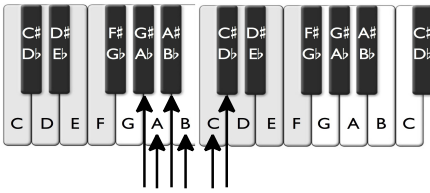
11 P5



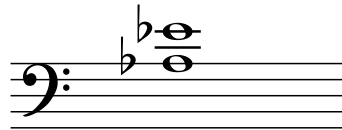
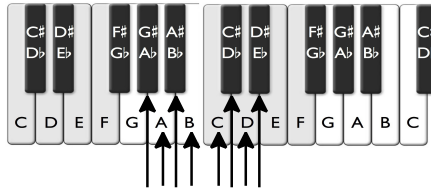
12 P4

(Perfect 4ths and 5ths)

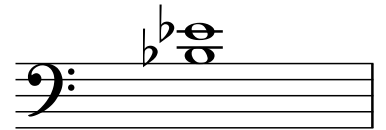
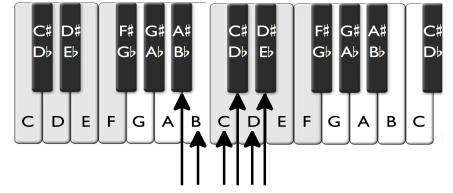
2



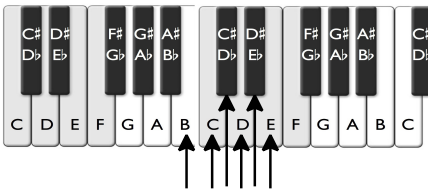
13 **P4**



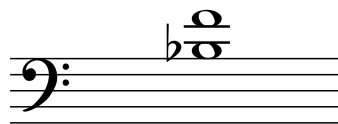
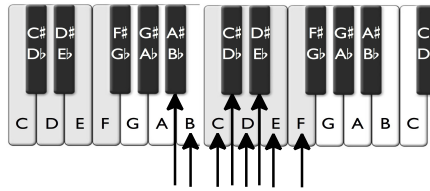
14 **P5**



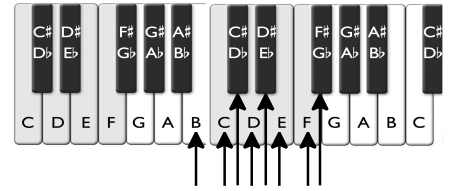
15 **P4**



16 **P4**



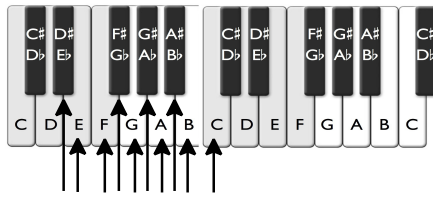
17 **P5**



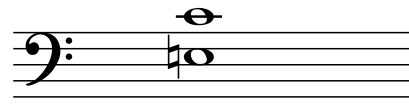
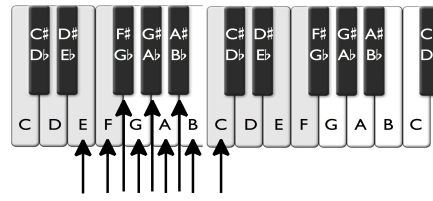
18 **P5**

Intervals (Minor and Major 6ths) - Speed Sheet 4

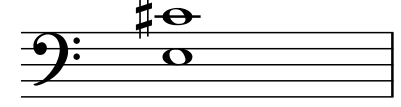
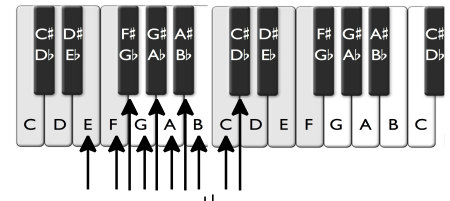
Count the half steps between the notes and indicate whether the interval is a minor 6th (m6) made of eight half steps or a major 6th (Ma6) made of nine half steps.



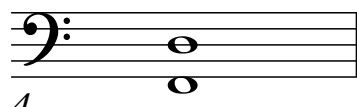
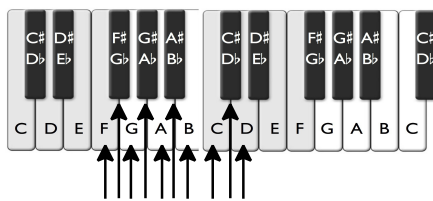
1 Ma6



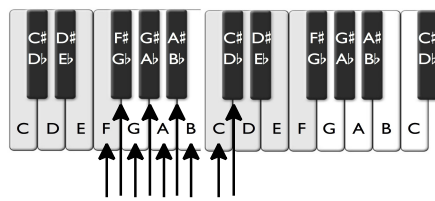
2 m6



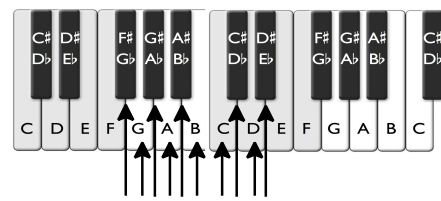
3 Ma6



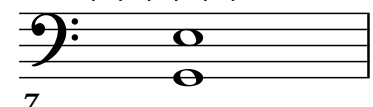
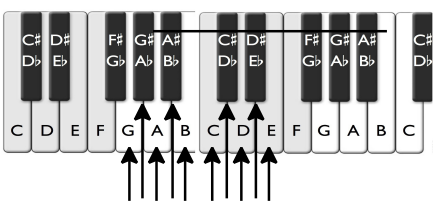
4 Ma6



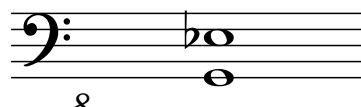
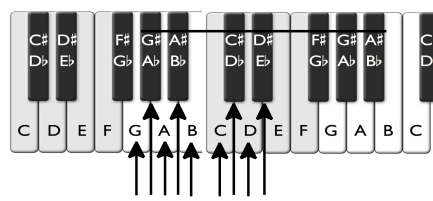
5 m6



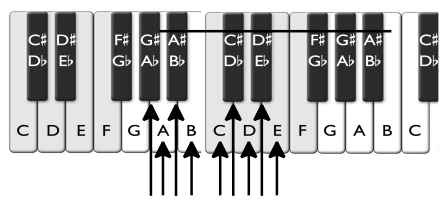
6 m6



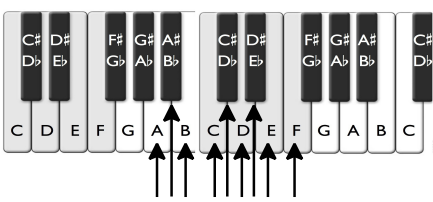
7 Ma6



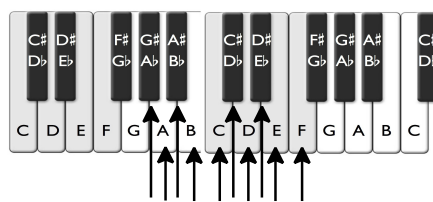
8 m6



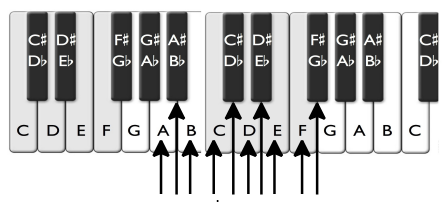
9 m6



10 m6



11 Ma6



12 m6

Intervals (Minor and Major 7ths) - Speed Sheet 5

Count the half steps between the notes and indicate whether the interval is a minor 7th (m7) made of **ten** half steps or a major 7th (Ma7) made of **eleven** half steps.

1 m7

2 Ma7

3 m7

4 Ma7

5 m7

6 #m7

7 Ma7

8 m7

9 Ma7