

Time _____

Name _____

Lesson 14. Time Signatures - Speed Sheet 1

Time Signatures tell us how many beats are in each measure and helps determine the general feel or style of the music. The "**Top**" number tells us how many beats are in each measure. The "**Bottom**" number tells us what note value gets one beat. For this sheet, the **bottom** number is 4, which means the "**Quarter Note**" gets one beat. The "**Top**" number tells us how many "**Quarter Notes**" are in each measure.

1 beat
per measure



1

2 beats
per measure



1 2

3 beats
per measure



1 2 3

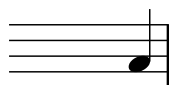
4 beats
per measure



1 2 3 4

Write the "**Time Signature**" at the beginning of each measure and write the number of "**Beats**" under each measure.

1



2



3



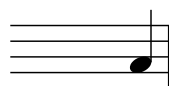
4



5



6



7



8



9



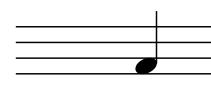
10



11



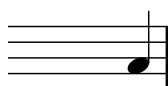
12



13



14



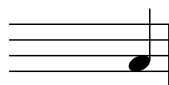
15



16



17



18



19



20



Time _____

Name _____

Lesson 14. Time Signatures and Barlines - Speed Sheet 2

Look closely at the "Time Signature" and draw a "circle" around the "Top" number. Write the "Number of beats" under each note and place the "Barline" after the correct number of beats. Be sure and put the "Double Barline" at the end of the last measure.

1

Barline Barline Barline Barline Barline Double Barline

1 1 1 1 2 2 3 1 4 1 1 2 1 1 1 1

2

3

4

5

6

7

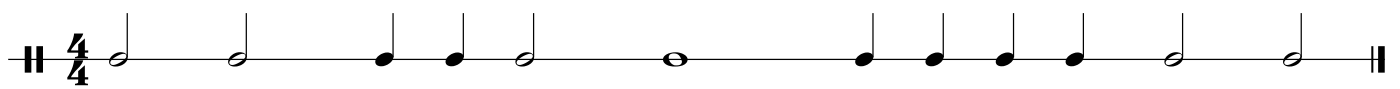
8

Name: _____

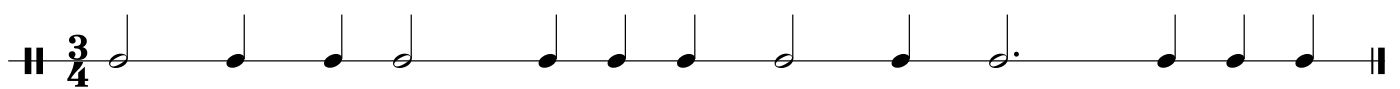
Lesson 14. Time Signatures

Place barlines to mark off the measures according to the Time Signature


1.



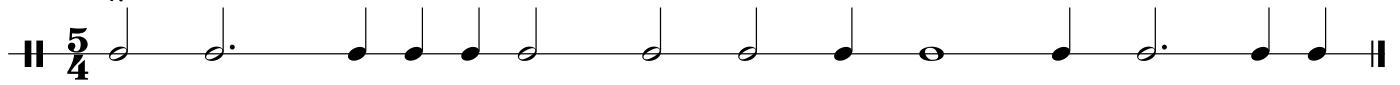
2.




3.



4.



5.



6.

