

Time _____

Name Answer Key

Intervals (Major and Minor 2nds) - Speed Sheet 1

Count the half steps between the notes and indicate whether the interval is a minor 2nd (m2) made of one half step or a major 2nd (Ma2) made of two half steps.

(Major and Minor 2nds)

2

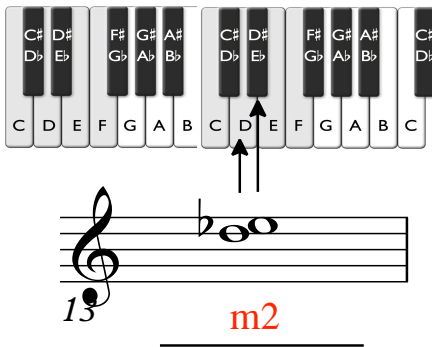


Diagram showing the interval of a minor 2nd (m2) between C and D. The piano keyboard diagram shows C and D. The musical notation shows C and D on a staff.

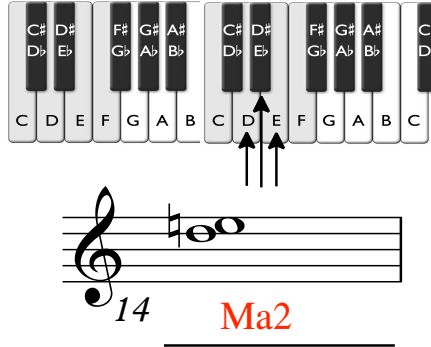


Diagram showing the interval of a major 2nd (Ma2) between C and D. The piano keyboard diagram shows C and D. The musical notation shows C and D on a staff.

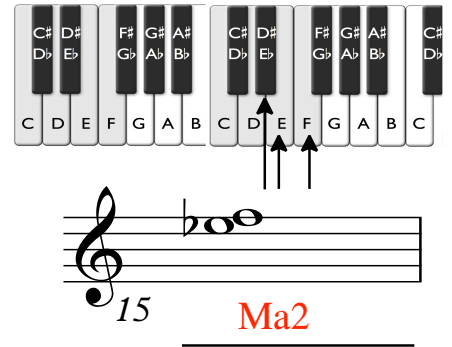


Diagram showing the interval of a major 2nd (Ma2) between C and E. The piano keyboard diagram shows C and E. The musical notation shows C and E on a staff.

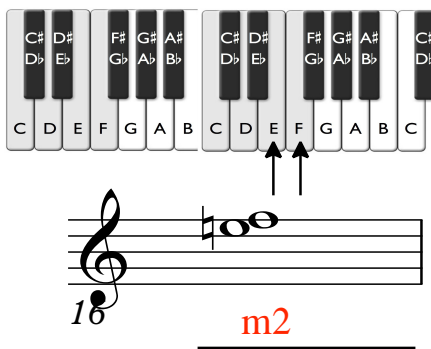


Diagram showing the interval of a minor 2nd (m2) between D and E. The piano keyboard diagram shows D and E. The musical notation shows D and E on a staff.

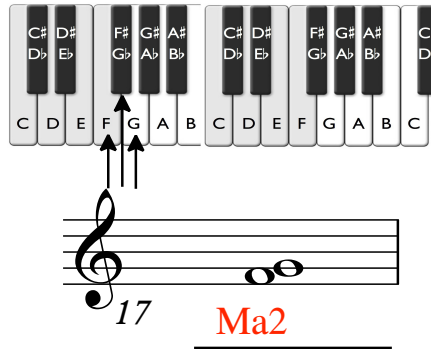


Diagram showing the interval of a major 2nd (Ma2) between D and F. The piano keyboard diagram shows D and F. The musical notation shows D and F on a staff.

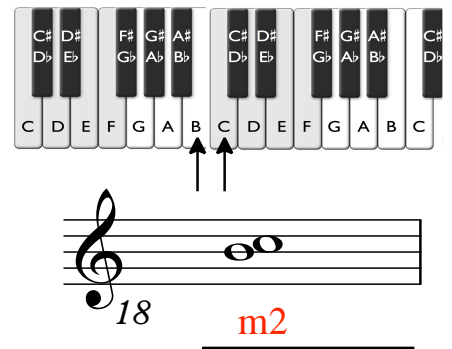


Diagram showing the interval of a minor 2nd (m2) between E and F. The piano keyboard diagram shows E and F. The musical notation shows E and F on a staff.

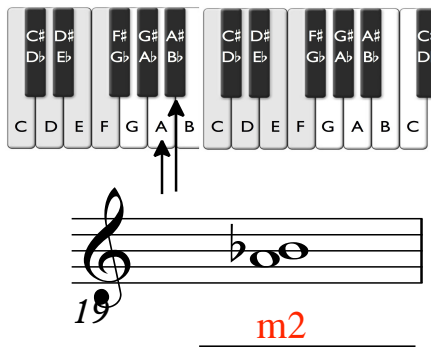


Diagram showing the interval of a minor 2nd (m2) between F and G. The piano keyboard diagram shows F and G. The musical notation shows F and G on a staff.

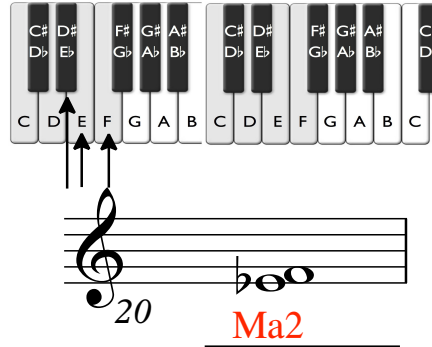


Diagram showing the interval of a major 2nd (Ma2) between F and A. The piano keyboard diagram shows F and A. The musical notation shows F and A on a staff.

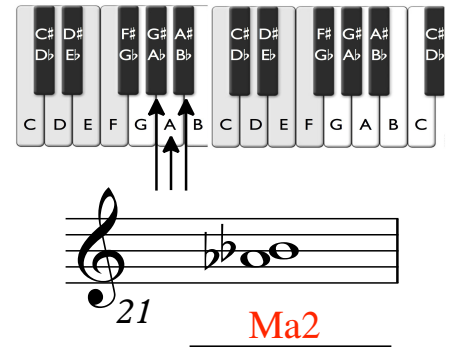


Diagram showing the interval of a major 2nd (Ma2) between G and A. The piano keyboard diagram shows G and A. The musical notation shows G and A on a staff.

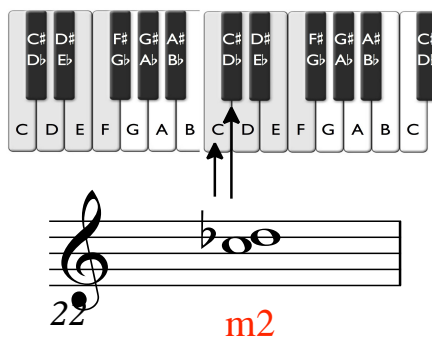


Diagram showing the interval of a minor 2nd (m2) between A and B. The piano keyboard diagram shows A and B. The musical notation shows A and B on a staff.

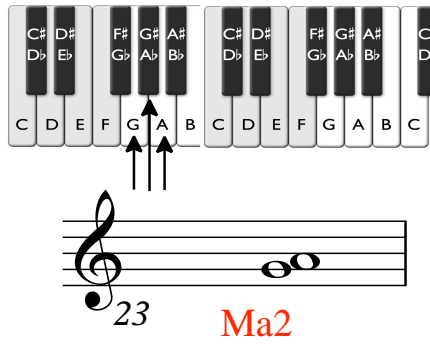


Diagram showing the interval of a major 2nd (Ma2) between B and C. The piano keyboard diagram shows B and C. The musical notation shows B and C on a staff.

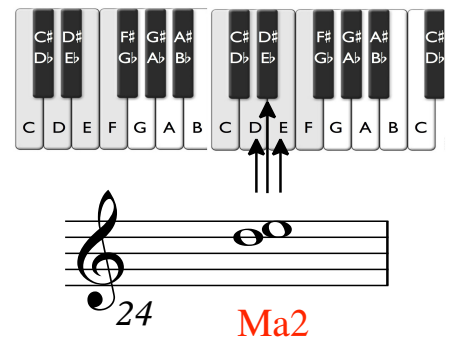


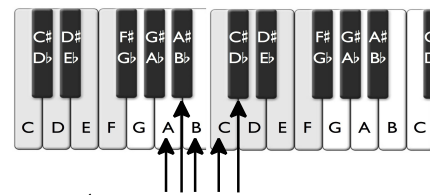
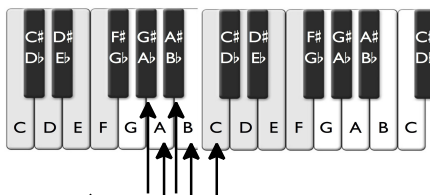
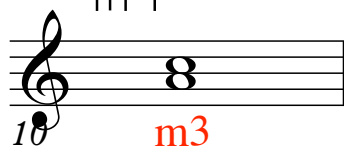
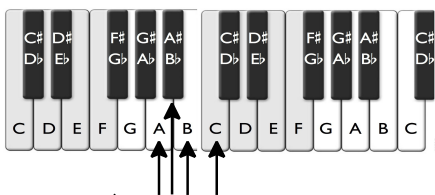
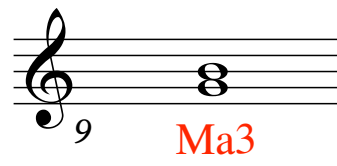
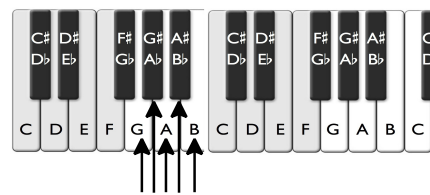
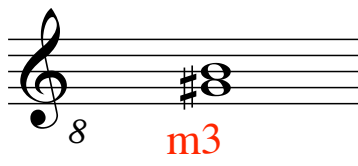
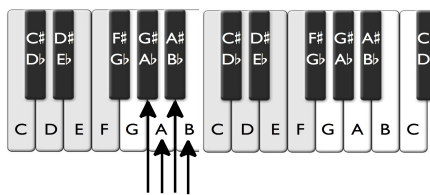
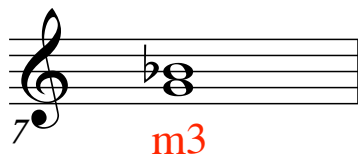
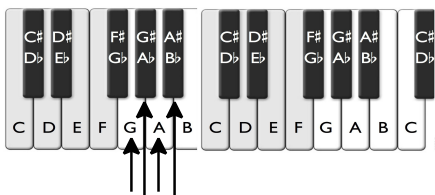
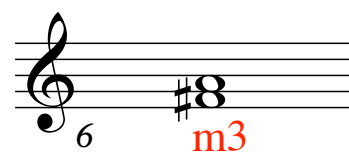
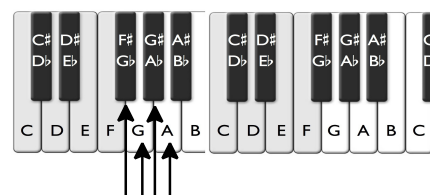
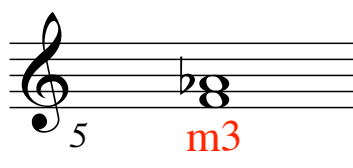
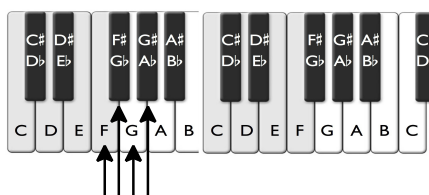
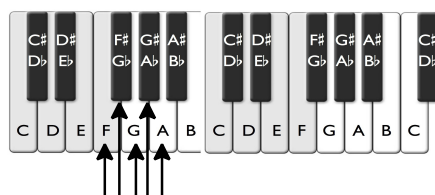
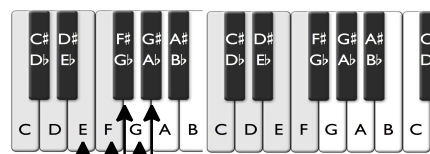
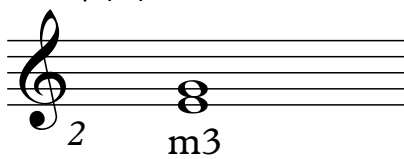
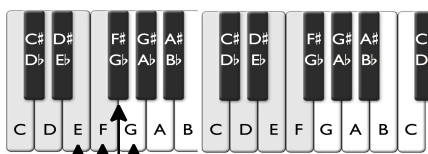
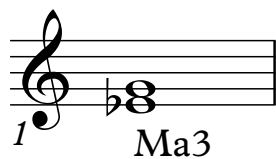
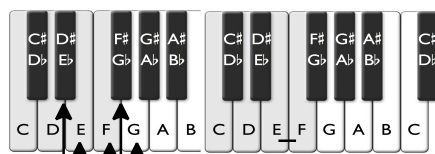
Diagram showing the interval of a major 2nd (Ma2) between C and D. The piano keyboard diagram shows C and D. The musical notation shows C and D on a staff.

Time _____

Name **Answer Key** _____

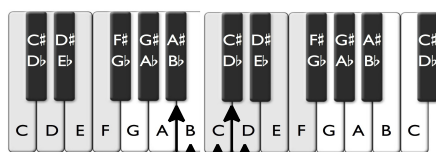
Intervals (Major and Minor 3rds) - Speed Sheet 2

Count the half steps between the notes and indicate whether the interval is a minor 3rd (m3) made of three half steps or a major 3rd (Ma3) made of four half steps.

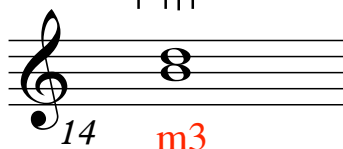
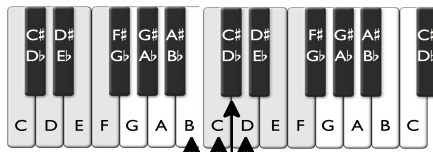


(Major and Minor 3rds)

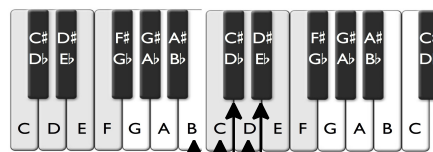
2



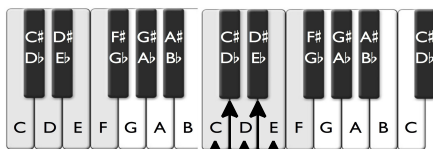
Ma3



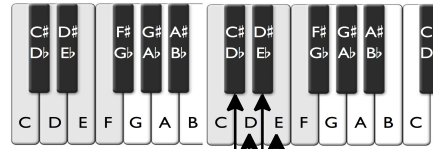
m3



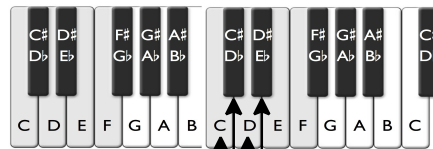
Ma3



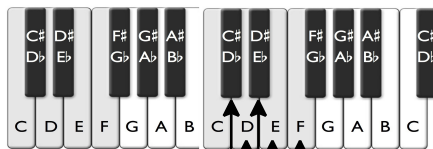
Ma3



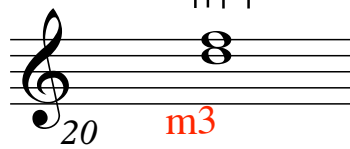
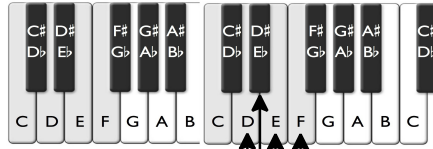
m3



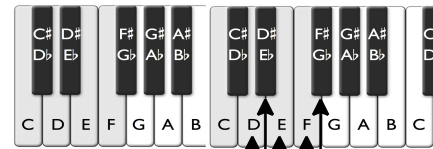
m3



Ma3



m3



Ma3

Time _____

Name _____ **Answer Key**

Intervals (Perfect 4ths and 5ths) - Speed Sheet 3

Count the half steps between the notes and indicate whether the interval is a perfect 4th (P4) made of five half steps or a perfect 5th (P5) made of seven half steps.

1 P4

2 P4

3 P5

4 P5

5 P4

6 P4

7 P5

8 P5

9 P4

10 P5

11 P5

12 P4

(Perfect 4ths and 5ths)

2

Diagram illustrating the interval 13 (Perfect 4th, P4). The keyboard shows the interval from G3 to C4. The musical staff shows G3 as a whole note and C4 as a half note below the staff. The interval is labeled **P4** in red.

Diagram illustrating the interval 14 (Perfect 5th, P5). The keyboard shows the interval from A3 to E4. The musical staff shows A3 as a whole note and E4 as a half note below the staff. The interval is labeled **P5** in red.

Diagram illustrating the interval 15 (Perfect 4th, P4). The keyboard shows the interval from B3 to E4. The musical staff shows B3 as a whole note and E4 as a half note below the staff. The interval is labeled **P4** in red.

Diagram illustrating the interval 16 (Perfect 4th, P4). The keyboard shows the interval from C4 to F4. The musical staff shows C4 as a whole note and F4 as a half note below the staff. The interval is labeled **P4** in red.

Diagram illustrating the interval 17 (Perfect 5th, P5). The keyboard shows the interval from D4 to A4. The musical staff shows D4 as a whole note and A4 as a half note below the staff. The interval is labeled **P5** in red.

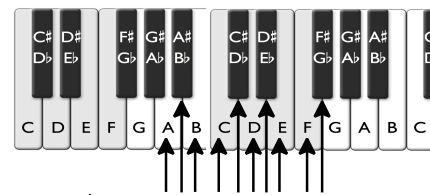
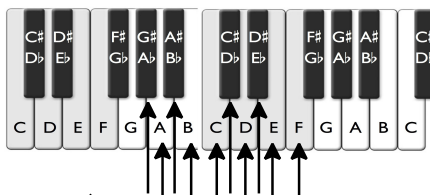
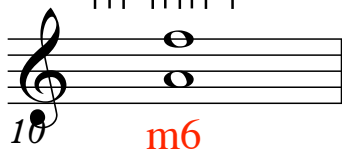
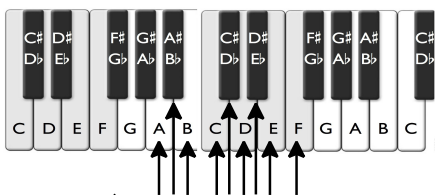
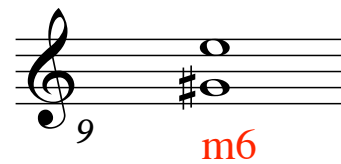
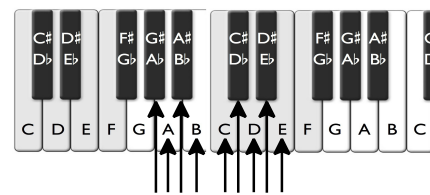
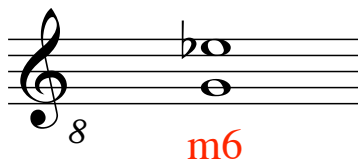
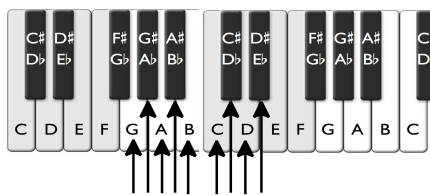
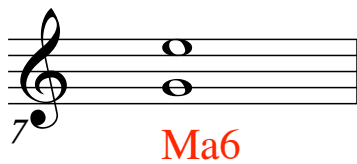
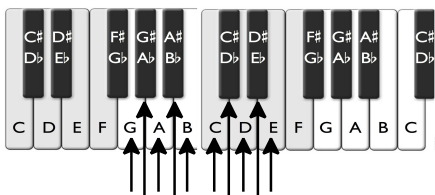
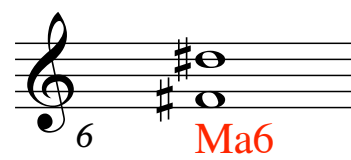
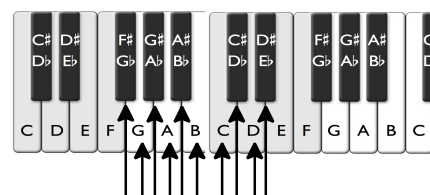
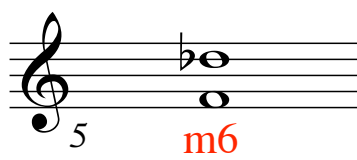
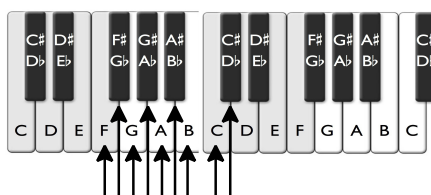
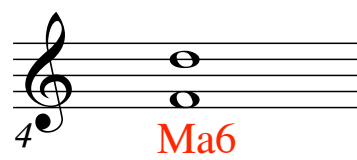
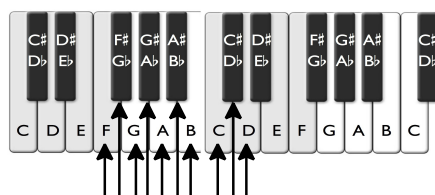
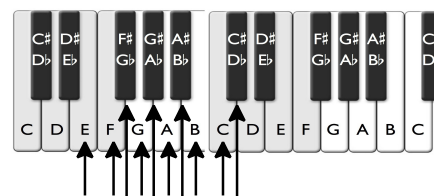
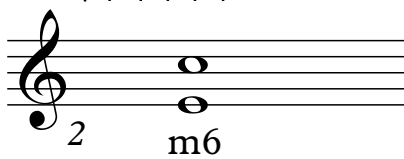
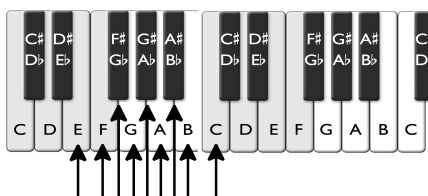
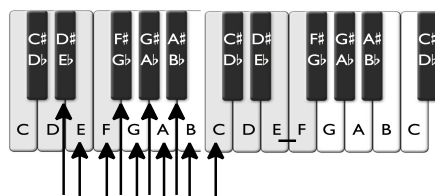
Diagram illustrating the interval 18 (Perfect 5th, P5). The keyboard shows the interval from E4 to B4. The musical staff shows E4 as a whole note and B4 as a half note below the staff. The interval is labeled **P5** in red.

Time _____

Name **Answer Key** _____

Intervals (Minor and Major 6ths) - Speed Sheet 4

Count the half steps between the notes and indicate whether the interval is a minor 6th (m6) made of eight half steps or a major 6th (Ma6) made of nine half steps.



Time_____

Name_____ **Answer key**

Intervals (Minor and Major 7ths) - Speed Sheet 5

Count the half steps between the notes and indicate whether the interval is a minor 7th (m7) made of **ten** half steps or a major 7th (Ma7) made of **eleven** half steps.

