

Basic Elements of Music

(Video tutorial available at <https://www.stephenhillcomposer.com/copy-of-video-lessons-basic-element>)

Name _____


Lesson 2 - Lines and Spaces Worksheet 1

Write the line number for each note.




Line 1 Line 2 Line 3 Line 4 Line 5

1 2 3 4 5 6 7 8 9 10




L1 _____


11 12 13 14 15 16 17 18 19 20




21 22 23 24 25 26 27 28 29 30



31 32 33 34 35 36 37 38 39 40

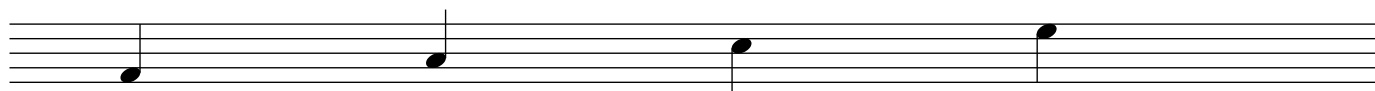


41 42 43 44 45 46 47 48 49 50



Name _____

Lesson 2 - Lines and Spaces Worksheet 2



Space 1 Space 2 Space 3 Space 4

Write the space number for each note.

1 2 3 4 5 6 7 8 9 10



S1 _____

11 12 13 14 15 16 17 18 19 20



21 22 23 24 25 26 27 28 29 30



31 32 33 34 35 36 37 38 39 40

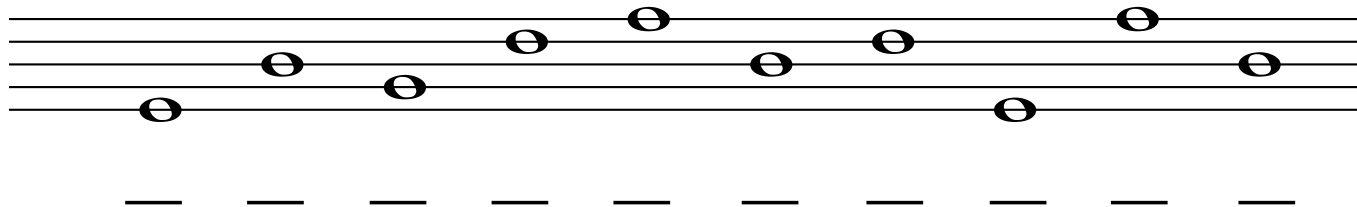


41 42 43 44 45 46 47 48 49 50



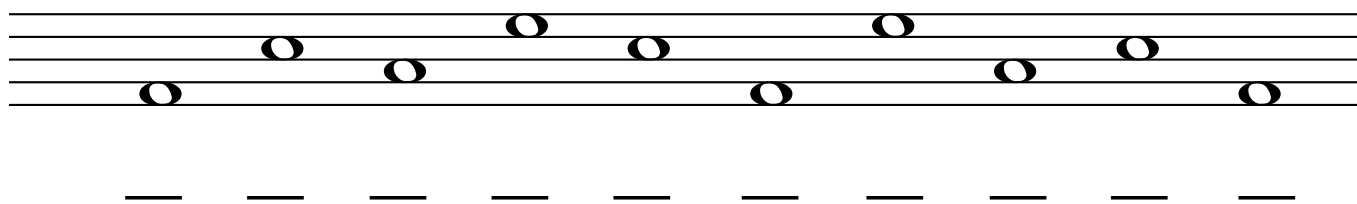
Lesson 2 - Lines and Spaces Worksheet 3

1. Write the letter "L" for "line" note and the line "number" on which the note is found.



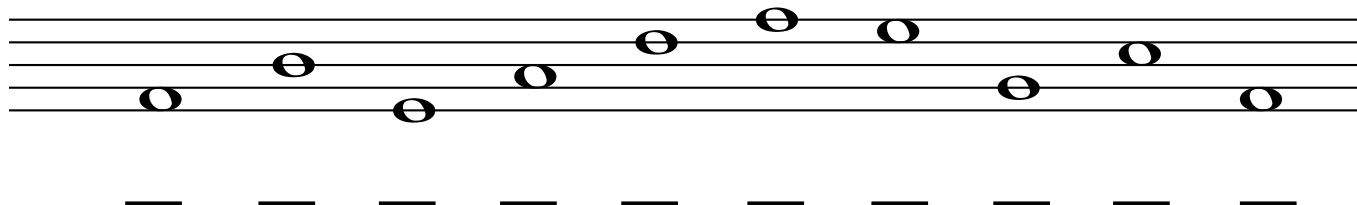
A musical staff with five lines. Ten whole notes are placed on the lines, alternating between the top and bottom lines. Below the staff are ten horizontal dashes for labeling.

2. Write the letter "S" for "space" note and the space "number" on which the note is found.

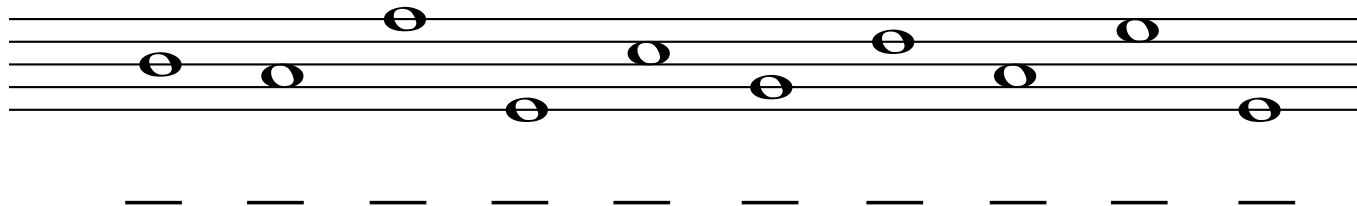


A musical staff with five lines. Ten whole notes are placed in the spaces between the lines, alternating between the top and bottom spaces. Below the staff are ten horizontal dashes for labeling.

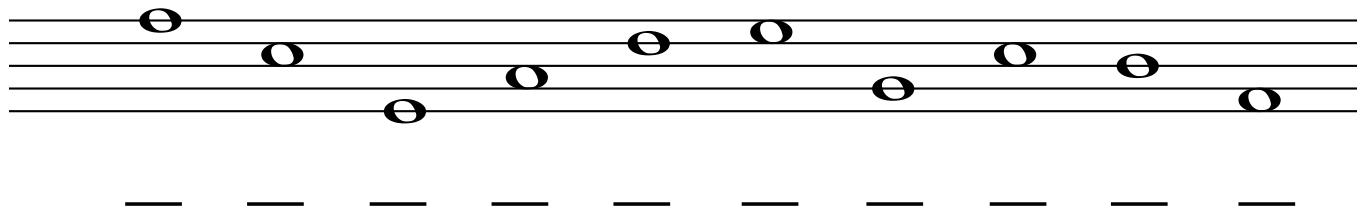
3. Write the letter "L" for "line" note or "S" for "space" note and the space "number" on which the note is found.



A musical staff with five lines. Ten whole notes are placed on lines and in spaces, alternating between the top and bottom. Below the staff are ten horizontal dashes for labeling.

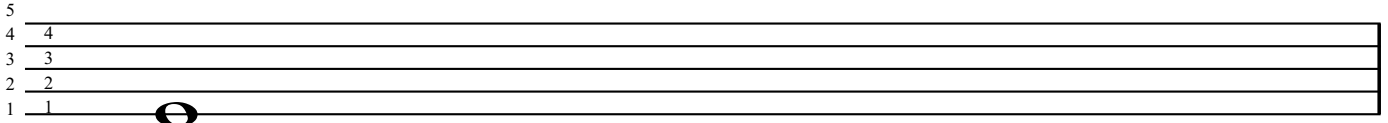


A musical staff with five lines. Ten whole notes are placed on lines and in spaces, alternating between the top and bottom. Below the staff are ten horizontal dashes for labeling.



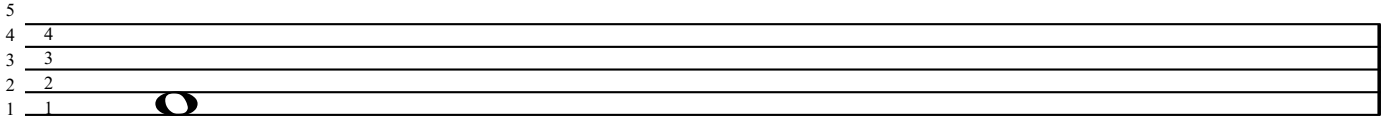
A musical staff with five lines. Ten whole notes are placed on lines and in spaces, alternating between the top and bottom. Below the staff are ten horizontal dashes for labeling.

2 1. Draw the note symbol on the **LINE** note indicated.



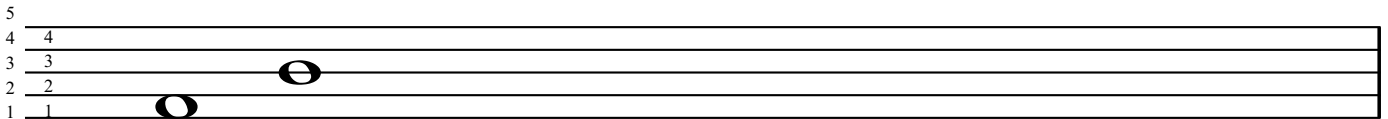
L1 L4 L2 L3 L4 L5 L1 L3 L2 L5

2. Draw the note symbol on the **SPACE** note indicated.

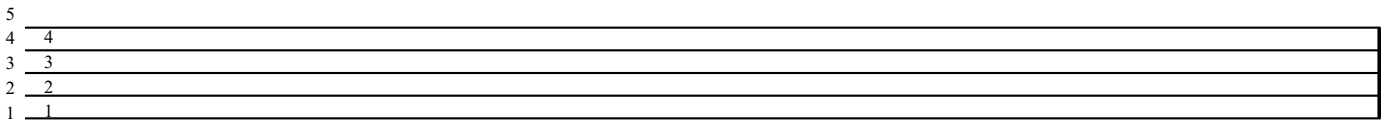


S1 S4 S2 S3 S4 S2 S1 S4 S2 S3

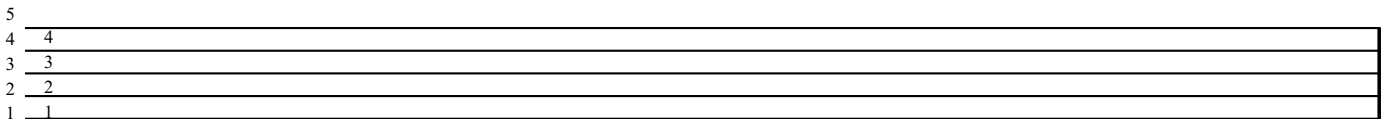
3. Draw the note symbol on the **LINE** or **SPACE** indicated.



S1 L3 L5 S4 L1 L4 S3 L2 S2 S1



L4 S4 L2 L5 S2 L1 L3 S3 S1 L4



L3 S2 L4 S3 L1 S4 L5 S1 L2 S4

Lesson 2 - Lines and Spaces Worksheet 4

Write the number and either "L" or "S" below each note to indicate the line or space where these notes appear.

A musical staff with five lines and four spaces. The notes are placed as follows: Line 1, Space 1, Line 2, Space 2, Line 3, Space 3, Line 4, Space 4, Line 5. Below the staff are ten dashed lines for labeling. The first two are pre-filled with "S2" and "L4".

A musical staff with five lines and four spaces. The notes are placed as follows: Line 1, Space 1, Line 2, Space 2, Line 3, Space 3, Line 4, Space 4, Line 5. Below the staff are ten dashed lines for labeling.

A musical staff with five lines and four spaces. The notes are placed as follows: Line 1, Space 1, Line 2, Space 2, Line 3, Space 3, Line 4, Space 4, Line 5. Below the staff are ten dashed lines for labeling.

A musical staff with five lines and four spaces. The notes are placed as follows: Line 1, Space 1, Line 2, Space 2, Line 3, Space 3, Line 4, Space 4, Line 5. Below the staff are ten dashed lines for labeling.

A musical staff with five lines and four spaces. The notes are placed as follows: Line 1, Space 1, Line 2, Space 2, Line 3, Space 3, Line 4, Space 4, Line 5. Below the staff are ten dashed lines for labeling.

A musical staff with five lines and four spaces. The notes are placed as follows: Line 1, Space 1, Line 2, Space 2, Line 3, Space 3, Line 4, Space 4, Line 5. Below the staff are ten dashed lines for labeling.